

Universe	Professional
Type	Verticality
Category	Connectors
Subcategory	Special lightweight carabiners

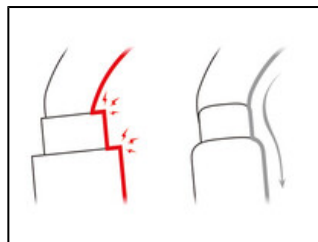


OMNI

Multidirectional semi-circle OMNI carabiner for fastening FALCON ASCENT, NEWTON, and VOLT harnesses or attaching a CROLL ventral rope clamp. It is available in two locking systems: automatic TRIACT-LOCK system or manual SCREW-LOCK system.



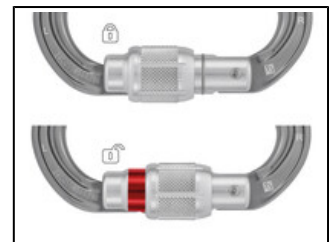
The OMNI carabiner can be used to fasten the FALCON ASCENT harness by joining the two textile attachment points.



The interior design of the OMNI carabiner limits the risk of having a catch point or cross-loading.



The H-frame provides a good strength-to-weight ratio and protects the markings from abrasion.





The OMNI SCREW-LOCK has a red visual indicator that allows the user to quickly see when the carabiner is unlocked.

Short Description	Multidirectional semi-circle carabiner
-------------------	--

Selling Points	<ul style="list-style-type: none">• Multidirectional carabiner:<ul style="list-style-type: none">- Fasten the FALCON ASCENT harness by joining the two textile attachment points, and connect a CROLL ventral rope clamp- Fasten a harness such as the NEWTON or VOLT by joining the two textile attachment points- Fasten an anchor strap such as a CONNEXION or WIRESTROP• Triaxial loading strength: 25 kN• Easier handling:<ul style="list-style-type: none">- Increased room on either end of the gate provides improved durability for textile attachment points- Designed with a smooth interior surface to reduce the risk of a catch point or cross-loading- Keylock system helps prevent the carabiner from snagging during use• H-frame:<ul style="list-style-type: none">- Construction provides superior carabiner strength-to-weight ratio- Helps protect markings from abrasion• Two locking systems available:<ul style="list-style-type: none">- TRIACT-LOCK: automatic locking with triple-action gate opening- SCREW-LOCK: the manual screw-lock has a red visual indicator when the carabiner is unlocked
----------------	---

Specification	<ul style="list-style-type: none">• Material(s): Aluminum• Certification(s): CE EN 362 B, CE EN 362 M, CE EN 12275 B, GB/T 23469 B, GB/T 23469 K
---------------	---

Specifications by reference

Reference(s)	M037AA00	M037BA00
		
Weight	75 g	80 g
Locking system	SCREW-LOCK	TRIACT-LOCK
Color(s)	Gray	Gray
Major axis strength	20 kN	20 kN
Minor axis strength	15 kN	15 kN
Open gate strength	7 kN	7 kN
Multidirectional strength	25 kN	25 kN
Gate opening	21 mm	21 mm
Made in	FR	FR
Guarantee	3 years	3 years
Inner Pack Count	1	1
Quantity Per Box	20	20
EAN	3342540850026	3342540850033

Related product(s)

- FALCON ASCENT
- NEWTON European version
- TOP CROLL®
- VOLT® European Version
- CONNEXION FIXE
- WIRE STROP